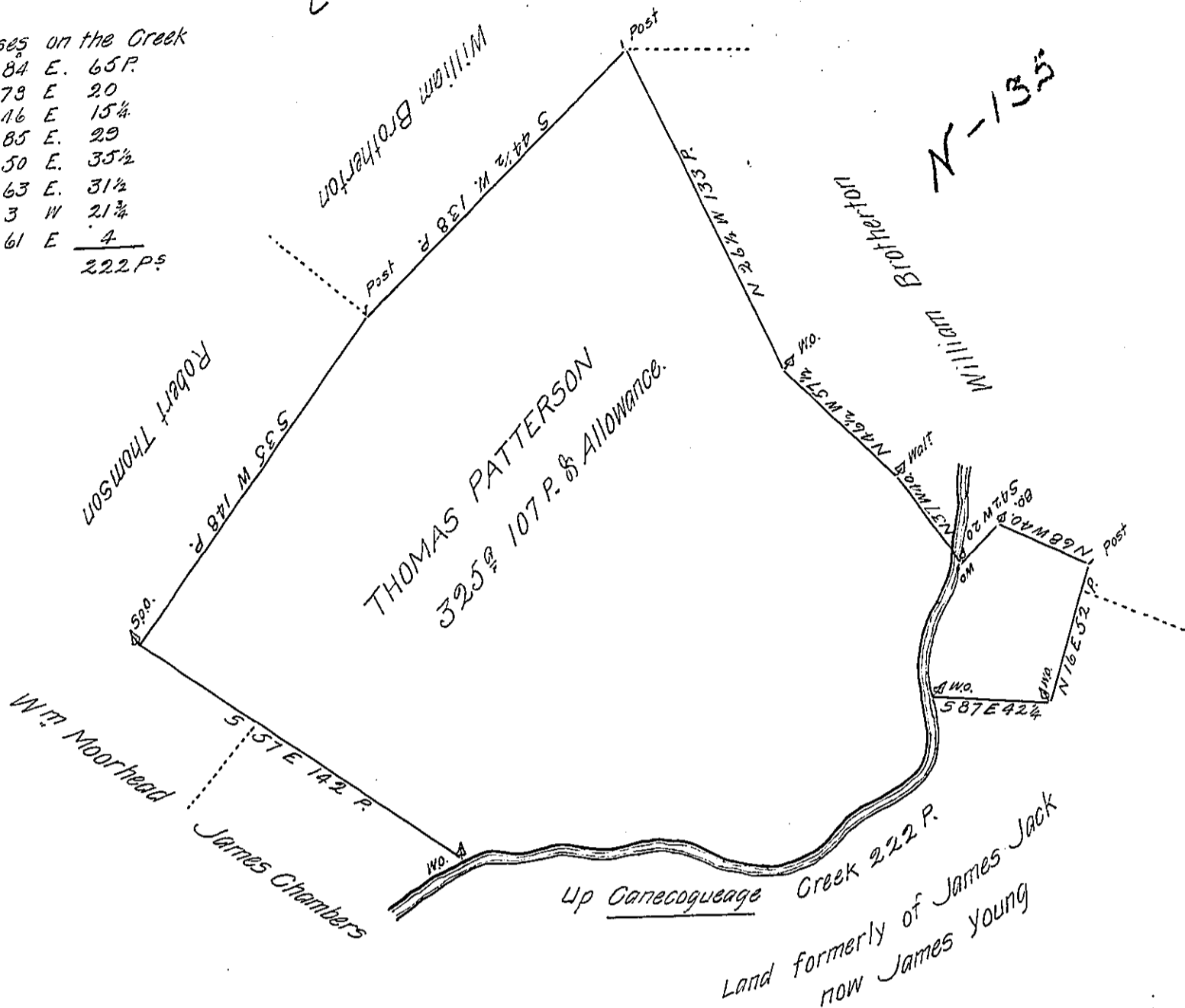


FORM NO. 1.

D-64-89  
C-6-2542, 6,

Courses on the Creek

1	N 84 E.	65 P.
2	N 78 E.	20
3	S 16 E.	15 1/4
4	S 85 E.	29
5	N 50 E.	35 1/2
6	N 63 E.	31 1/2
7	N 3 W.	21 1/4
8	N 61 E.	4
		222 P.



A Draft of a Tract of Land situate partly in Hamilton, and partly in Guilford, Townships, formerly in the County of Cumberland, but now in the County of Franklin, Containing three hundred and twenty five Acres and 107 Perches and the Allowance of Six P. Cent. for Roads &c. resurveyed March 29<sup>th</sup> 1792 in pursuance of a Warrant granted to Thomas Patterson bearing Date the 3<sup>d</sup> Day of June 1762.

Matth Henderson D.S.

To Daniel Brodhead Esquire }  
Surveyor General of Pennsylvania }

IN TESTIMONY that the above is a copy of the original remaining on file in the Department of Internal Affairs of Pennsylvania, made conformably to an Act of Assembly approved the 16th day of February, 1833, I have hereunto set my Hand and caused the Seal of said Department to be affixed at Harrisburg, this twenty fifth day of JUNE 1906.

*Isaac R. Brown*  
Secretary of Internal Affairs.